

Supporting Information

Design and Synthesis of Nanoscale Titanium-Porphyrin Coordination Nanomaterials for Photodynamic-Sonodynamic Synergistic Therapy of Tumor Cells

Wei Wang ^{#,1}, Wenquan Huang ^{#,2}, Liu Huang ^{#,3}, Yan Li ¹, Shuzhang Xiao ^{1,4*},
Haichuang Lan ¹, Peng Geng ^{1,2,4*}

¹ Key Laboratory of Inorganic Nonmetallic Crystalline and Energy Conversion Materials, College of Materials and Chemical Engineering, China Three Gorges University, Hubei Yichang 443002, China.

² College of Medicine and Health Science, China Three Gorges University, Yichang 443002, China.

³ College of Basic Medical Science, China Three Gorges University, Yichang 443002, China.

⁴ Hubei Three Gorges Laboratory, Hubei Yichang 443007, China.

E-mail: shuzhangxiao@ctgu.edu.cn (S. Z. Xiao); gengpeng@ctgu.edu.cn (P. Geng)

[#]These authors share the first authorship.

1. Experimental Section

Reagents: HMME (analytical grade, supplied by Shanghai Macklin Biochemical Co., Ltd.); Titanium tetrachloride (TiCl₄, analytical grade, from Shanghai Macklin Biochemical Co., Ltd.); *N, N*-Dimethylformamide (DMF, superior grade, purchased from Shanghai Aladdin Biochemical Technology Co., Ltd.); 1,3-Diphenylisobenzofuran (DPBF, spectrally pure, obtained from Shanghai Aladdin Biochemical Technology Co., Ltd.), among others. Mice colorectal cancer (CT26) cells purchased from Chinese Academy of Sciences. The STR identification results

were as follows:

1-1 14 15

1-2 17 18

2-1 16 17

3-2 14 14

4-2 21.3 21.3

5-5 14 14

6-4 18 20

6-7 12 12

7-1 25.2 25.2

8-1 13 13

11-2 17 17

12-1 16 17

13-1 16.2 17.2 18.2

15-3 21.3 22.3

17-2 15 16 17

18-3 19 20

19-2 13 13

X-1 25 26

2. Supplementary Figures

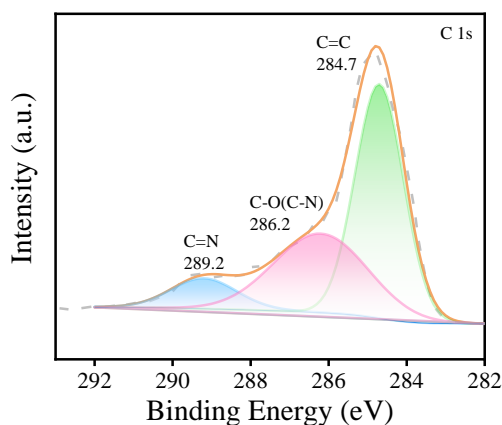


Figure S1. C 1s spectrum of TiCPs.

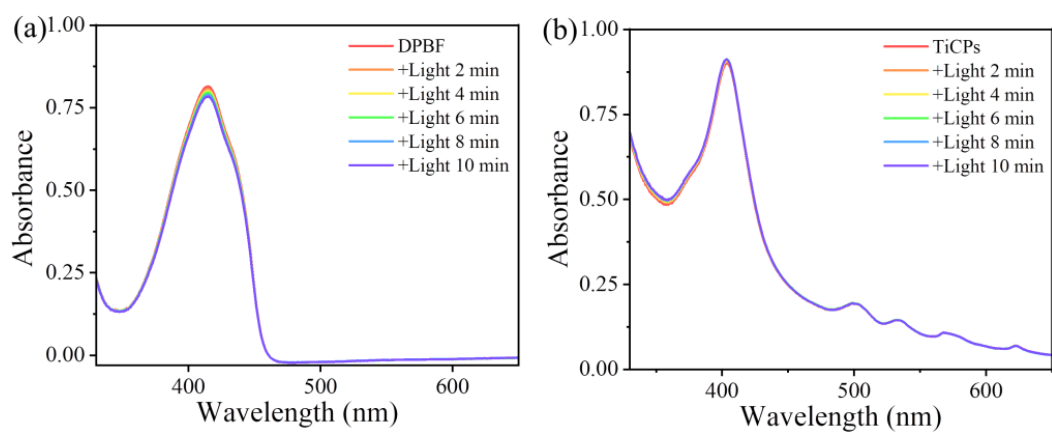


Figure S2. Time-dependent UV-vis absorption spectra of (a) DPBF+Light and (b) TiCPs+Light.

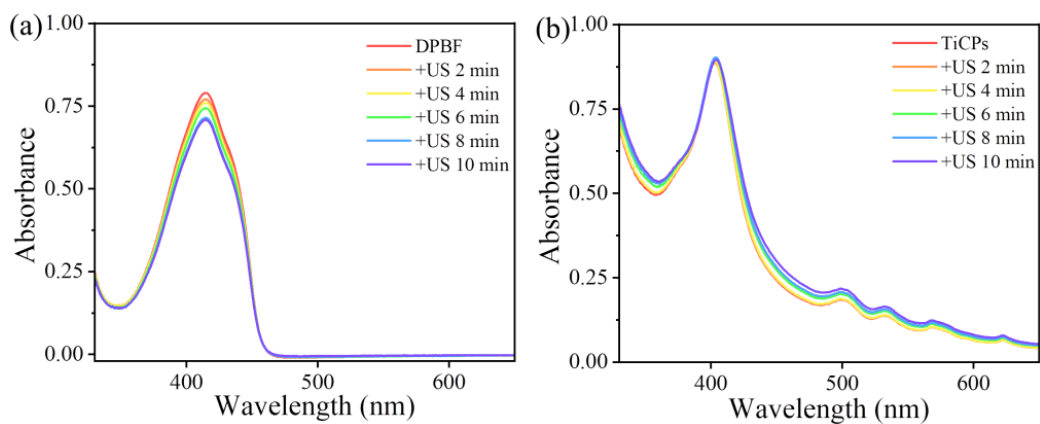


Figure S3. Time-dependent UV-vis absorption spectra of DPBF+US (a) and TiCPs+US (b).

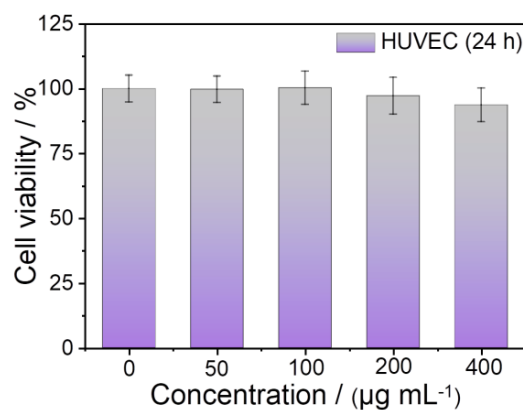


Figure S4. Cell viability of HUVEC cells co-cultured with different concentrations of TiCPs for 24 h.

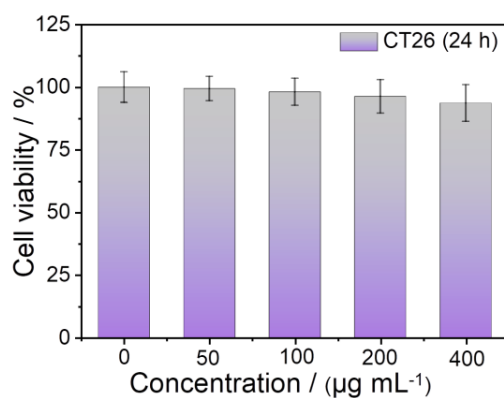


Figure S5. Cell viability of CT26 cells co-cultured with different concentrations of TiCPs for 24 h.

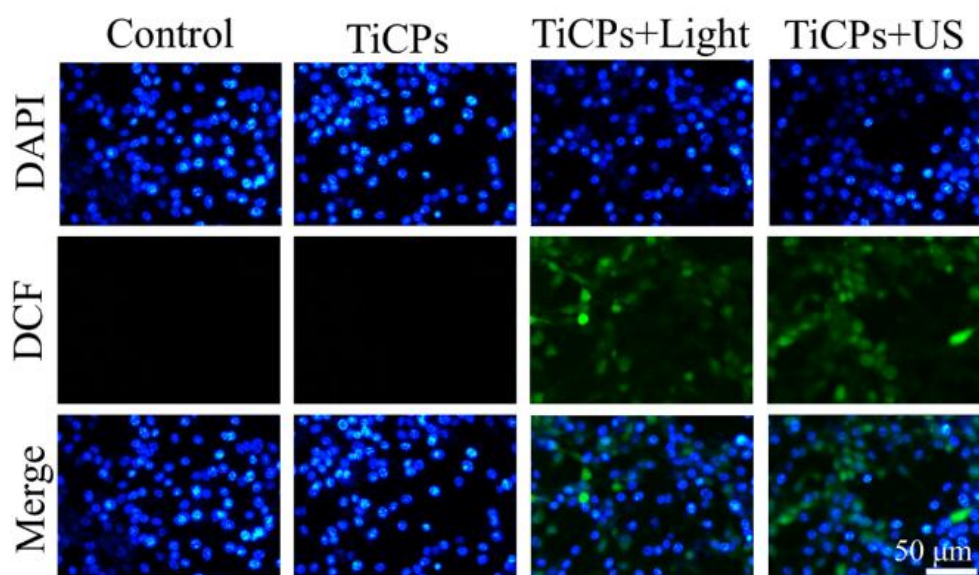


Figure S6. Fluorescent images of CT26 cells incubated with TiCPs and DCFH-DA assay upon irradiation with light/US.