

Certificate of Analysis

Catalog No: S-CP-N1719
Product Name: N/A
Seq: KYYGNGVTCGKHSCSVDWGWKATTCIINNGAMAWATGGHQGNHKC
Modification: N/A
Length: 44AA
Solvent(1mg/mL)*: Ultrapure water
Storage: -20 °C
Comments: TFA salt

Item	Specifications	Result
Molecular Weight:	Theoretical MW: 4628.18	Consistent
HPLC Purity:	≥90%	94.1%
Appearance:	White lyophilized powder	Conforms
Weight:	4mg	4*1mg

Operator *Tingting Liu* Checker *Zhixiong Liu* Auditor *Brianly*

Quality Control Approved

Date: 2023.5.5

*Note: 1mg polypeptide can be completely dissolved in 1mL recommended solvent. For further requirements on peptide dissolving conditions, please select 'Peptide Solubility Test Service'.

Elabscience Biotechnology Inc.

Website : www.elabscience.com

Technical Support : techsupport@elabscience.com

Address : 14780 memorial drive, suite 216, houston, TX77079

For Research Use Only

Thank you for your recent purchase.

If you would like to learn more about Peptides Service, please visit www.elabscience.com

**Focus on lab research
Service for life science**

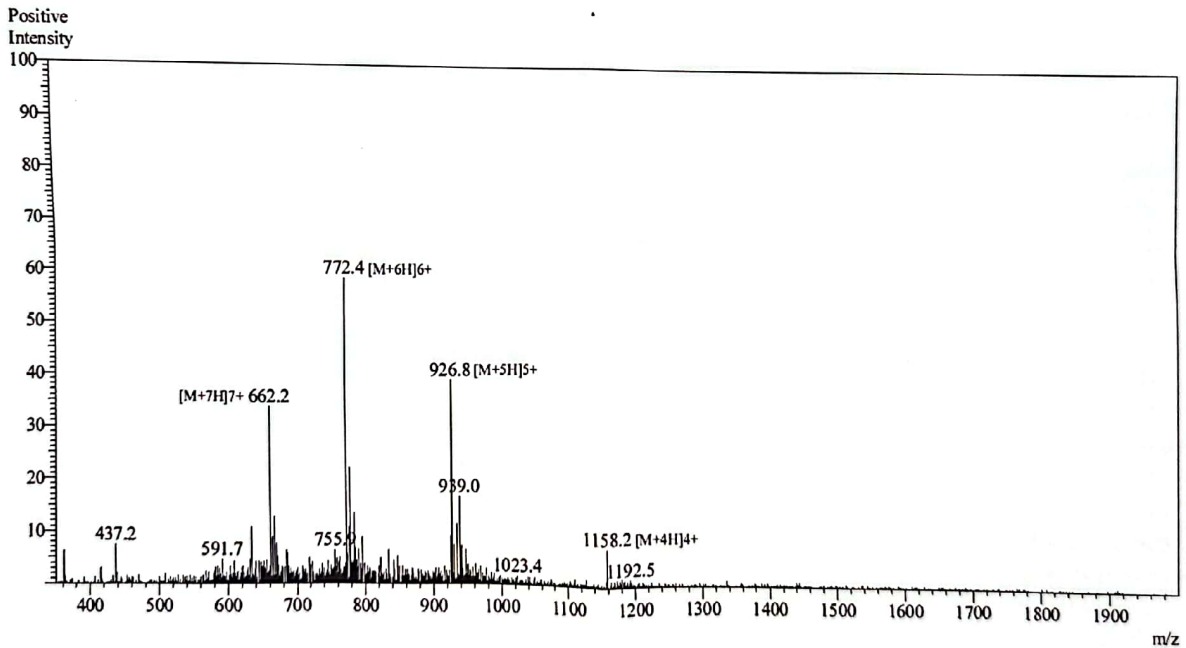
Mass Information

Sample ID : S-CP-N1719
Sample Name: N/A
Injection Volume: 0.8µL
Theoretical Mw: 4628.18
Observed Mw: 4628.4

Interface: ESI
Nebulizing Gas Flow: 1.5L/min
CDL Temp: 250
Block Temp: 200

Equipment: GK11010007
Interface Bias: +4.5kv
Total Flow: 0.2 mL/min
B.conc 50%H₂O/50%MeOH

Mass Spectrum



For Research Use Only

Thank you for your recent purchase.

If you would like to learn more about Peptides Service, please visit www.elabscience.com

Focus on lab research
Service for life science

HPLC Information

Analytical Column Type: Inertsil ODS-SP(4.6*250mm)

Wavelength:220nm

Total Flow: 1 mL/min

Procedure Time: 35.01min

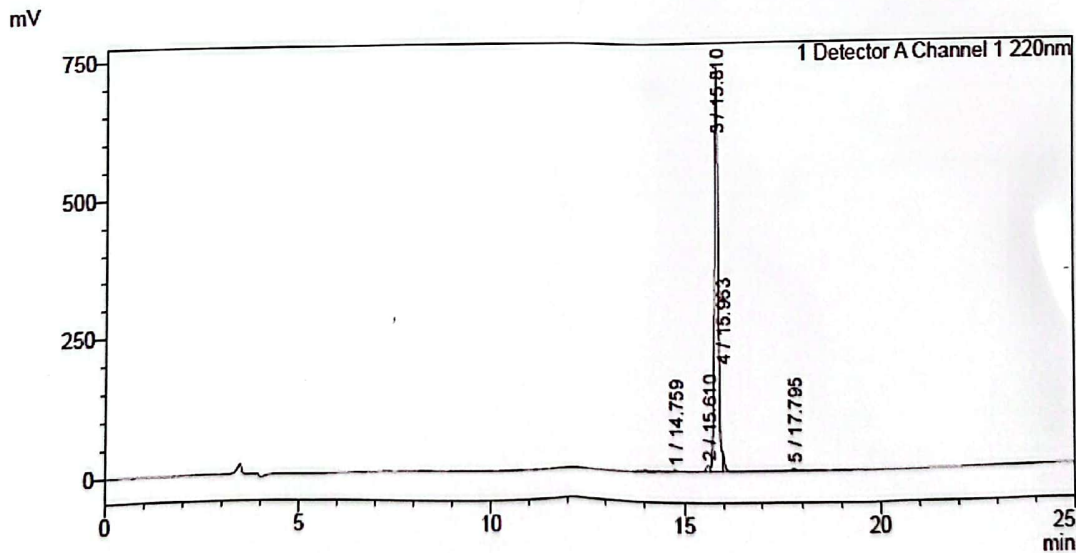
Buffer A Composition: 0.065%Trifluoroacetic in 100% water

Buffer B Composition: 0.05%Trifluoroacetic in 100% acetonitrile

Gradient Program:

Time (min)	% Buffer A	% Buffer B
0.01	5	95
25.00	65	35
25.01	95	5
27.00	95	5
27.01	5	95
35.00	5	95
35.01	Stop	

Chromatogram



For Research Use Only

Thank you for your recent purchase.

If you would like to learn more about Peptides Service, please visit www.elabscience.com

**Focus on lab research
Service for life science**

Peak Table

Detector A 220 nm

Peak#	Ret. Time	Area	Height	Area%
1	14.759	46068	2281	0.924
2	15.610	72907	11074	1.463
3	15.810	4689936	721709	94.102
4	15.963	147705	35313	2.964
5	17.795	27290	3811	0.548
Total		4983906	774188	100.000

For Research Use Only

Thank you for your recent purchase.
If you would like to learn more about Peptides Service, please visit www.elabscience.com

**Focus on lab research
Service for life science**