

# Raw western blots (Figures 1-8)

1. All lanes used in the manuscript and used for densitometry analysis (N=3) are labeled. Unlabeled lanes were not used for analysis.
2. All proteins used in the manuscript and used for analysis are appropriately labeled. Unlabeled proteins were either not used for analysis or were labeled in subsequent slides.
3. All protein lysate was obtained from PC3 cells.
4. All densitometry analysis was normalized to housekeeping protein (GAPDH).
5. Blue lines indicates how the blot was spliced for final presentation.
6. Single blue line indicates where the blot was physically cut.
7. Red boxes indicate how the blot was cropped for publication (approximately).
8. Labeling:
  - Lanes
    - 1: Control
    - 2: Strc 250  $\mu$ M- 24h treatment
    - 3: Strc 250  $\mu$ M- 48h treatment
  - Proteins
    - pGSK3b = phospho-GSK3 $\beta$  (ser9)
    - pAKT = phospho-AKT (ser473)

Figure 1



This replicate was used in Figure 2a of the manuscript

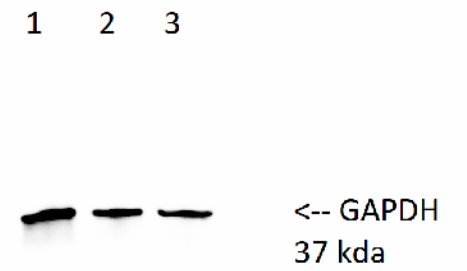
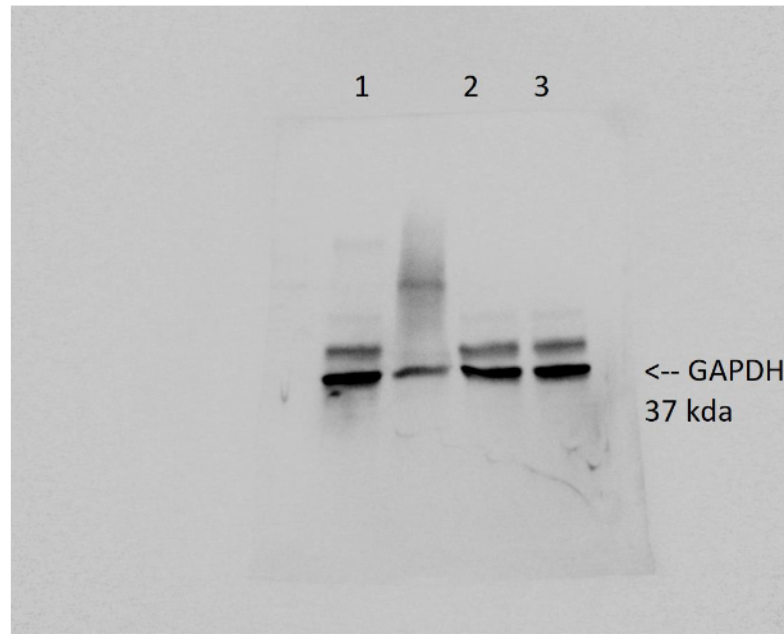
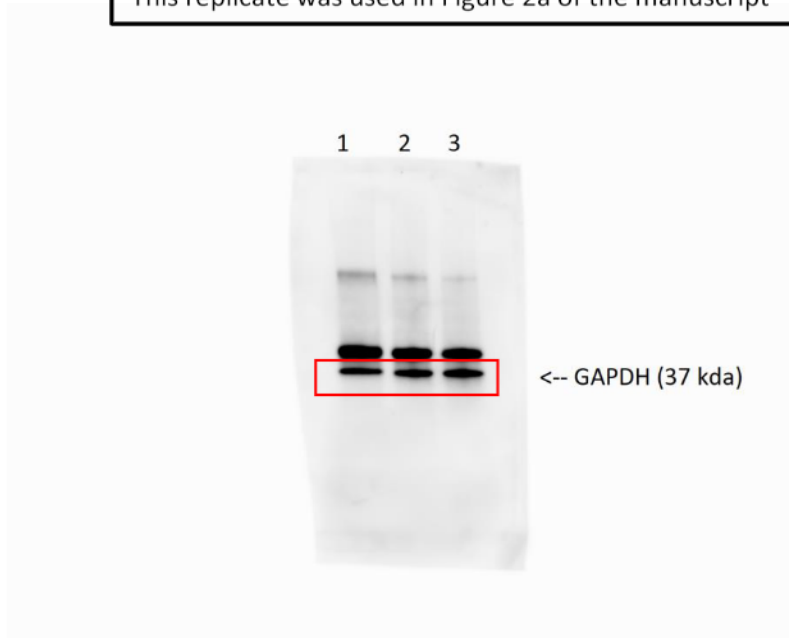
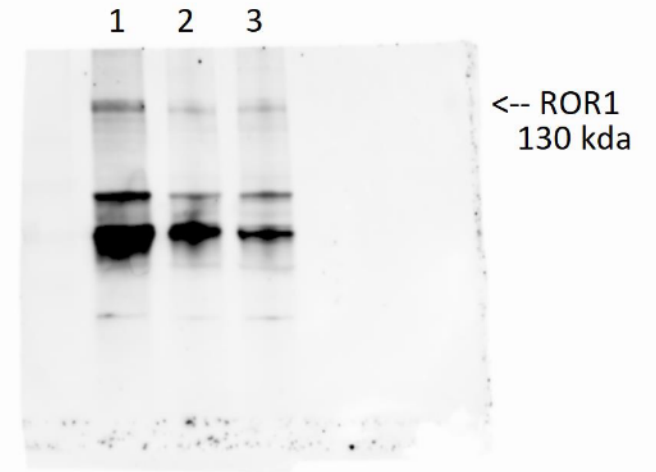
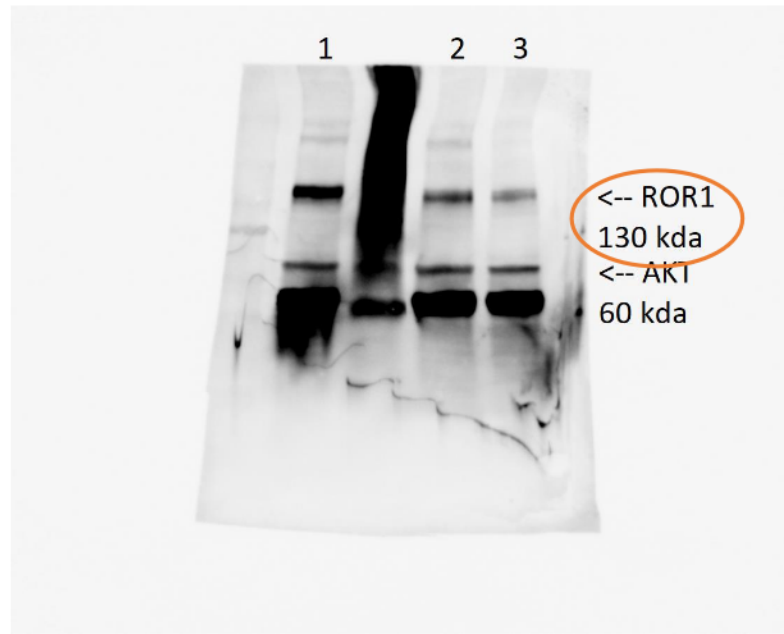
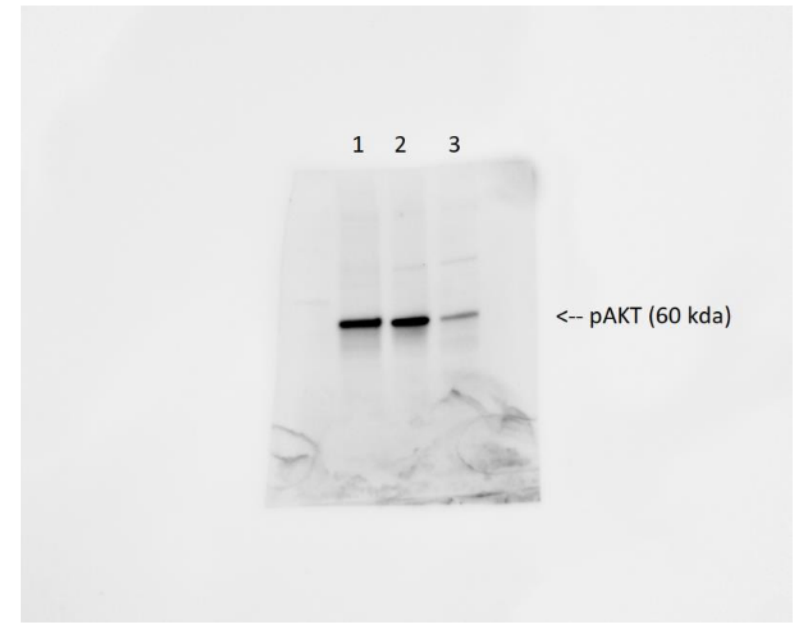
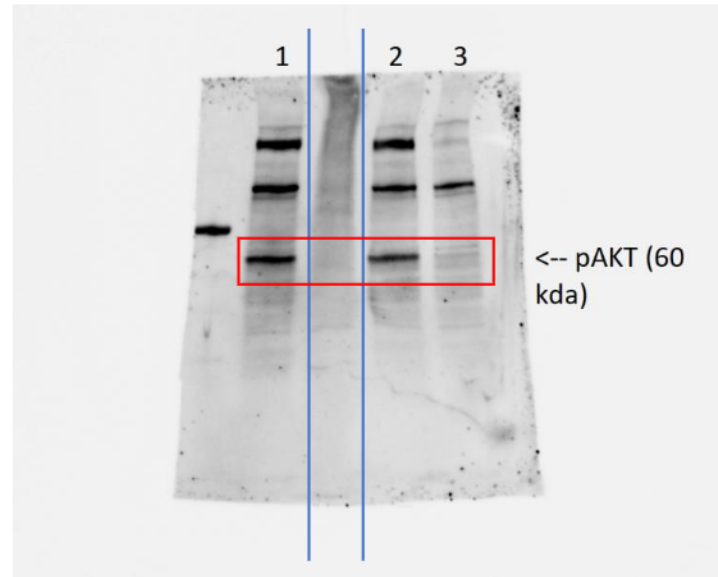
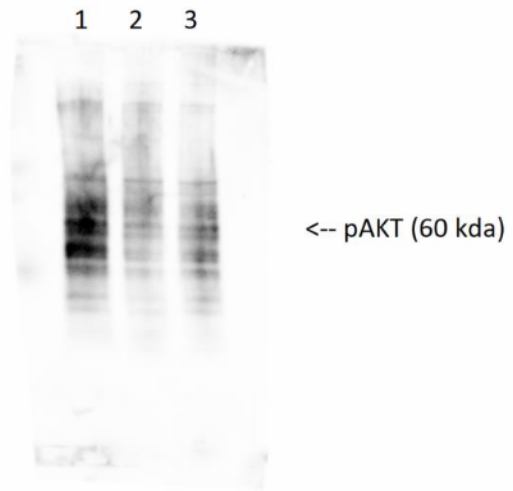
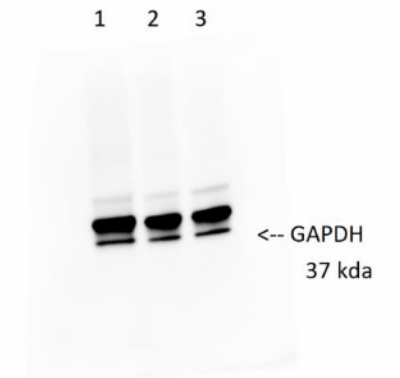
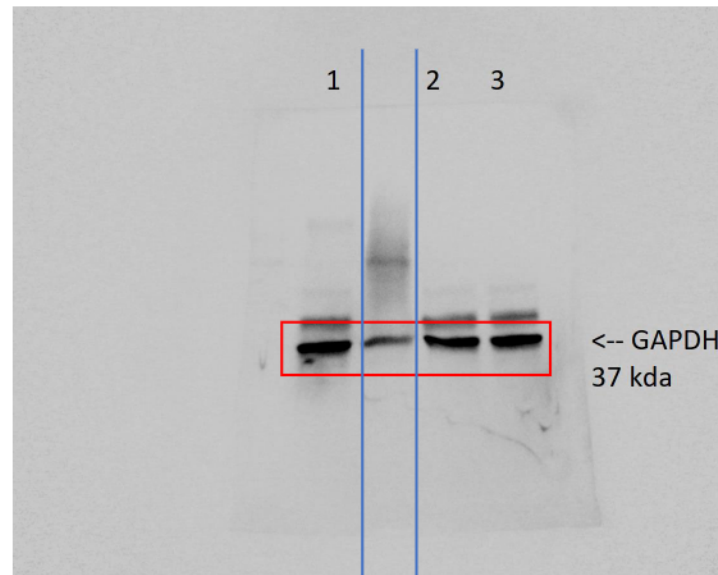
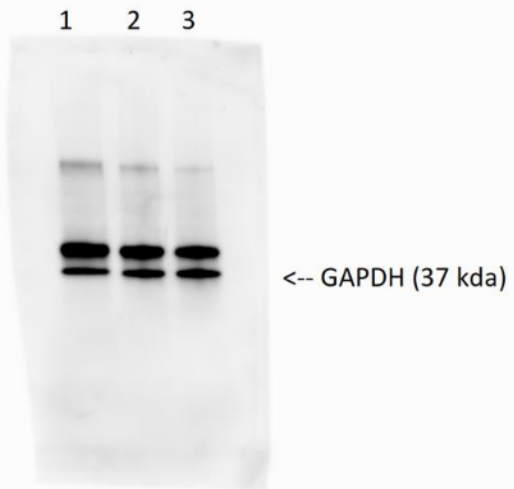


Figure 2



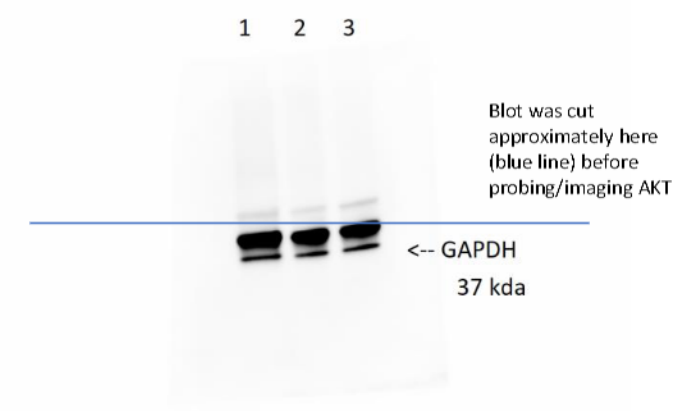
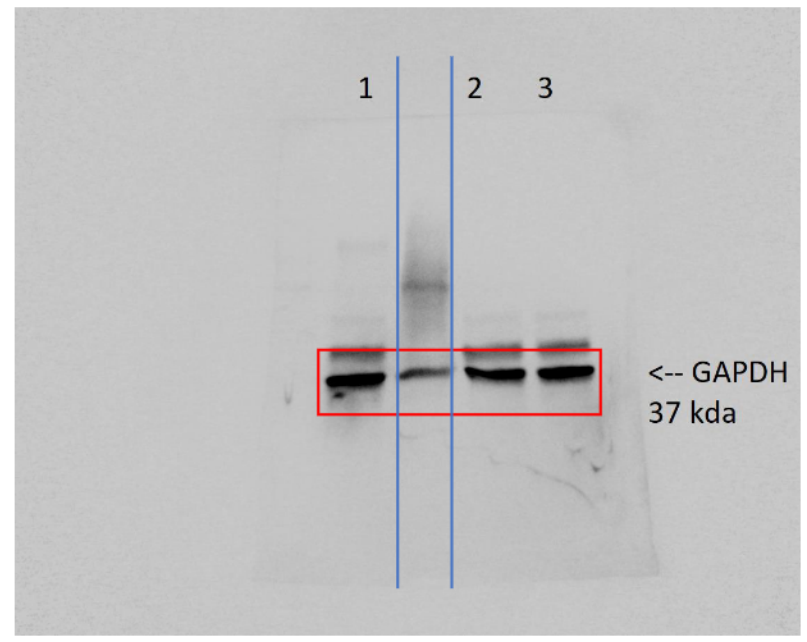
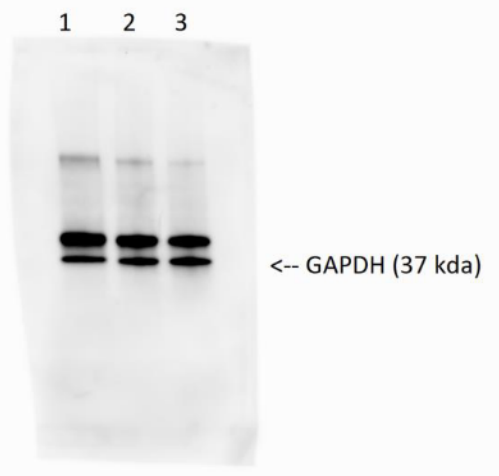
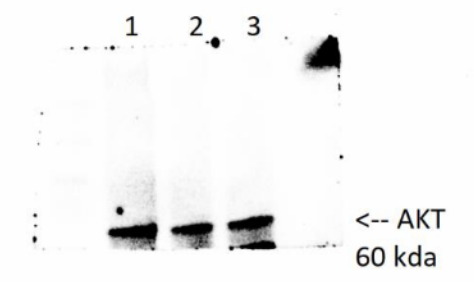
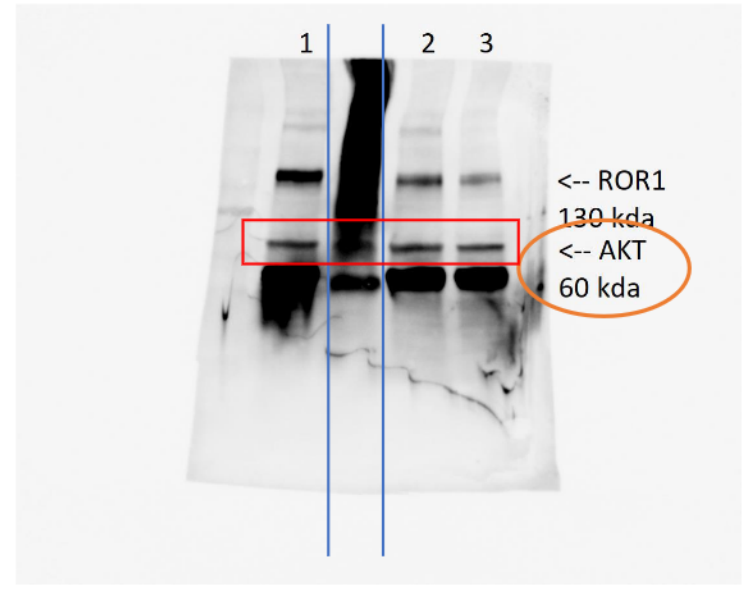
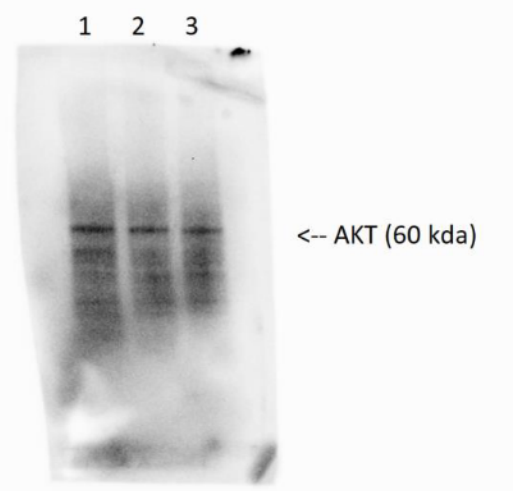
This replicate was used in Figure 2c of the manuscript



Vertical blue lines indicate how the blot was spliced for final presentation

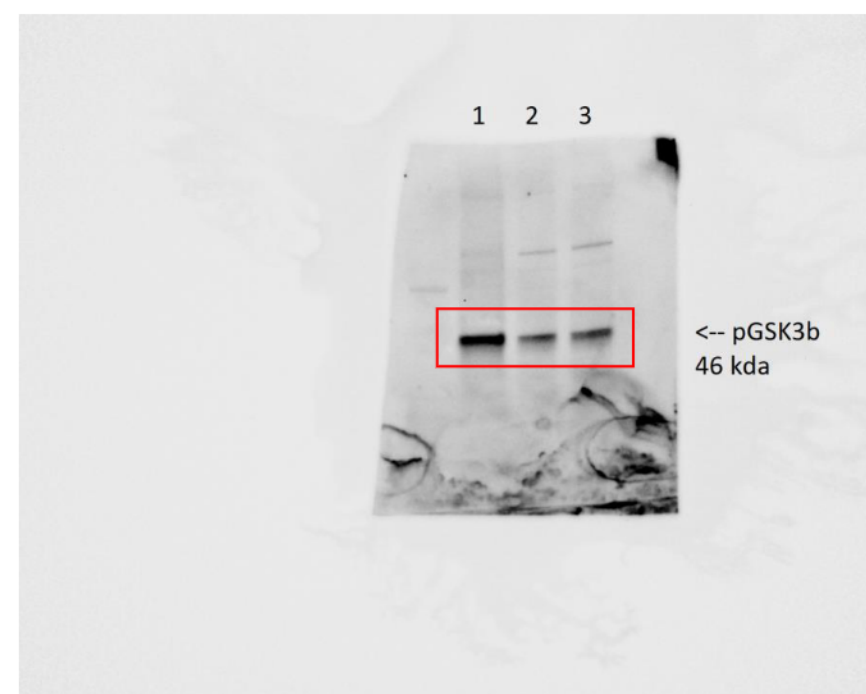
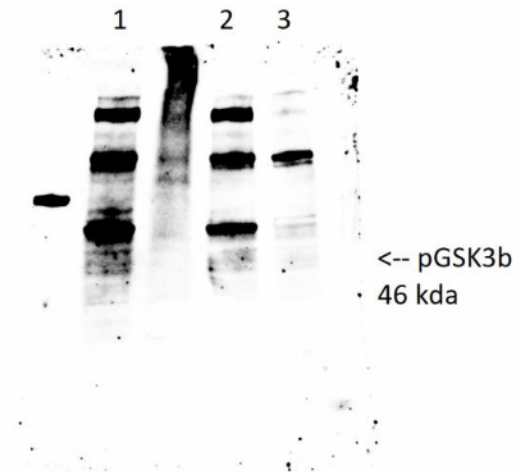
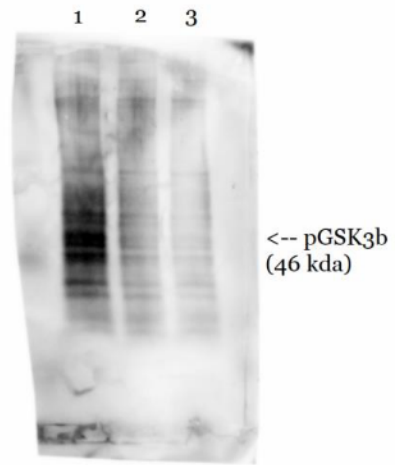
Figure 3

This replicate was used in Figure 2c of the manuscript

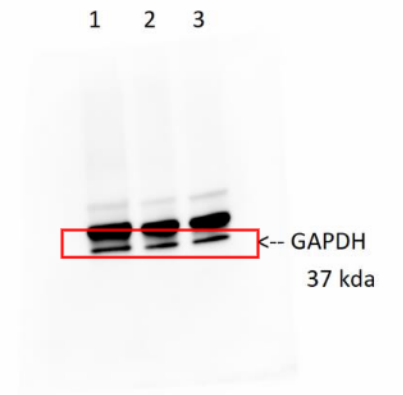
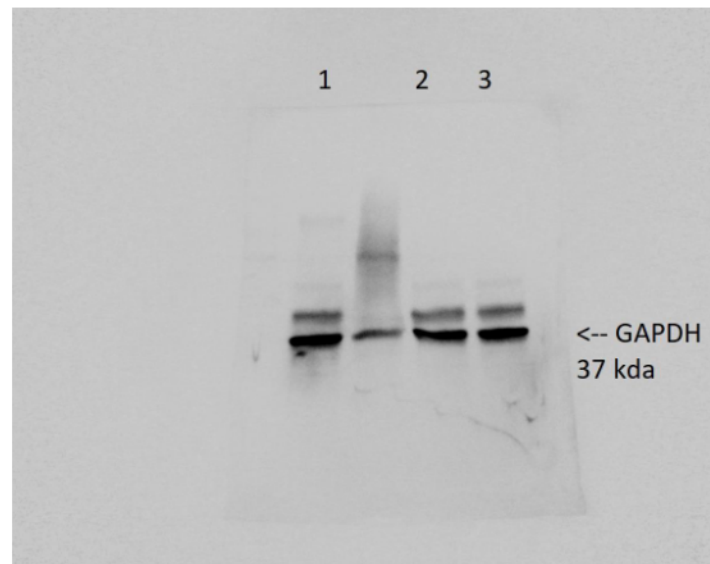
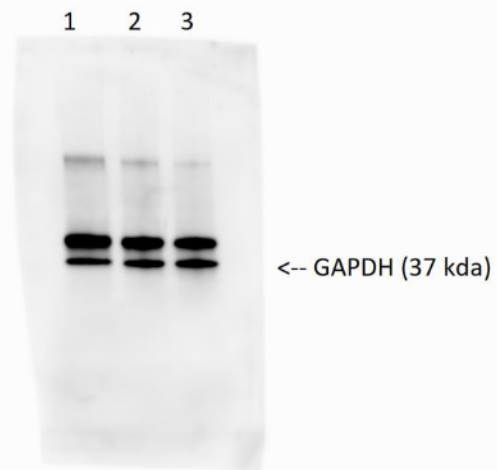


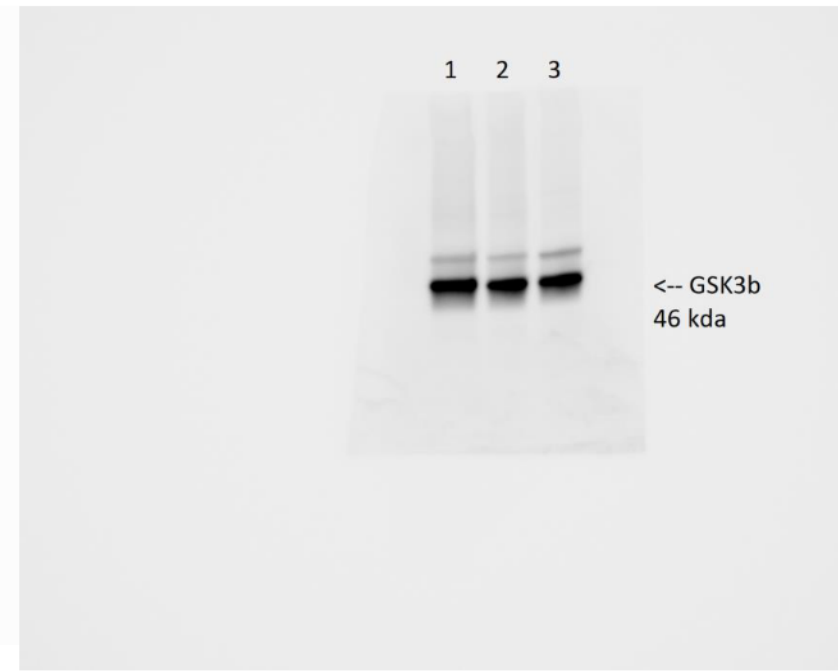
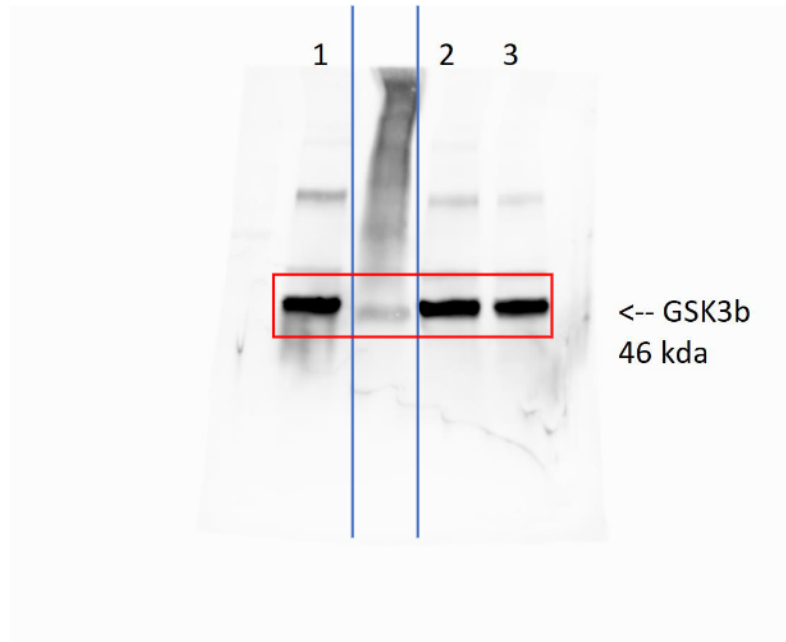
Vertical blue lines indicate how the blot was spliced for final presentation

Figure 4

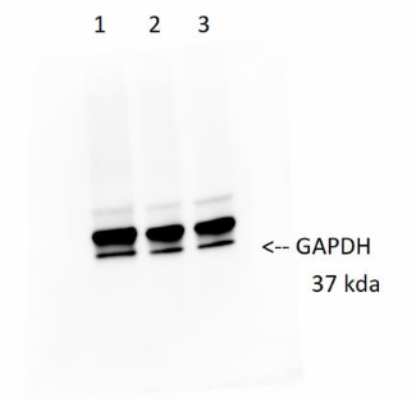
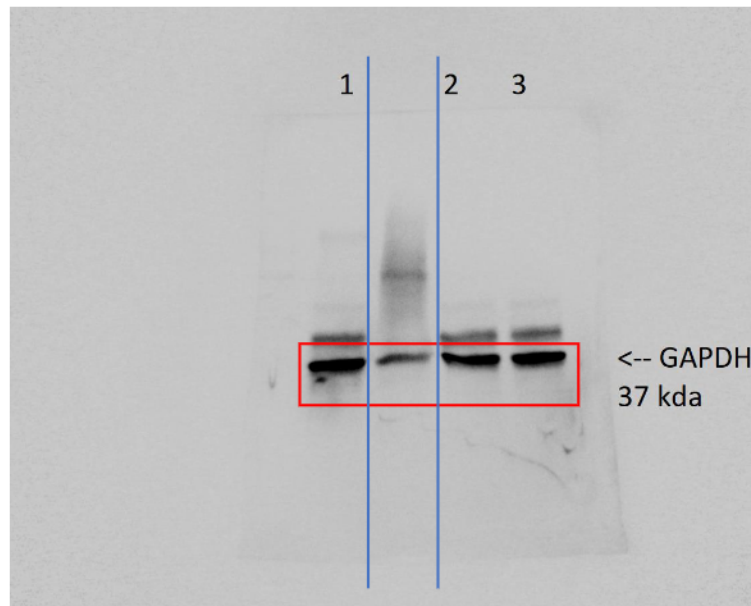
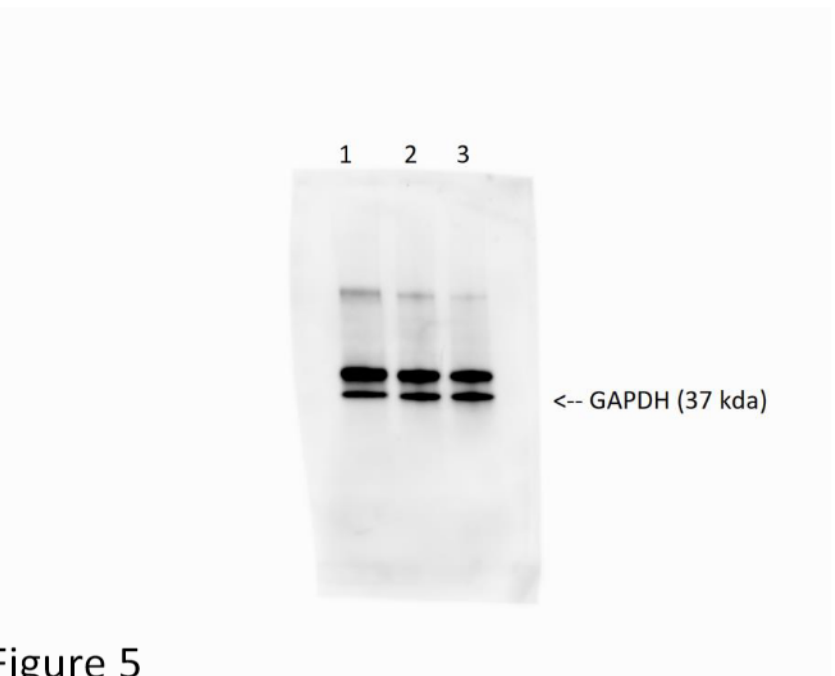


This replicate was used in Figure 2c of the manuscript





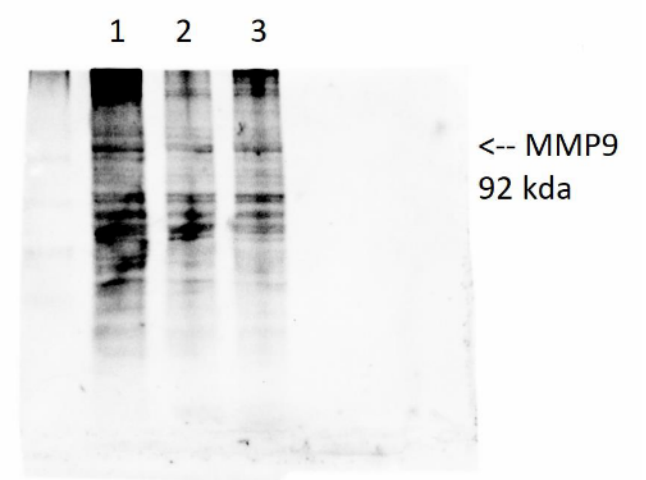
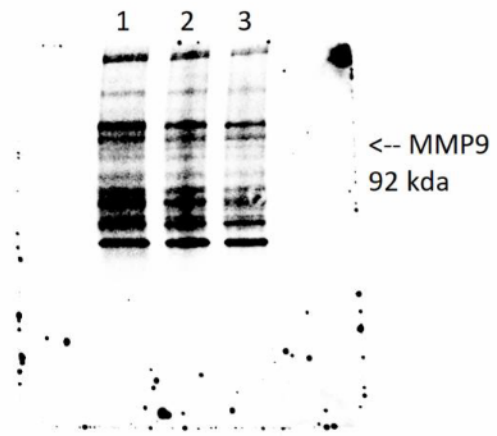
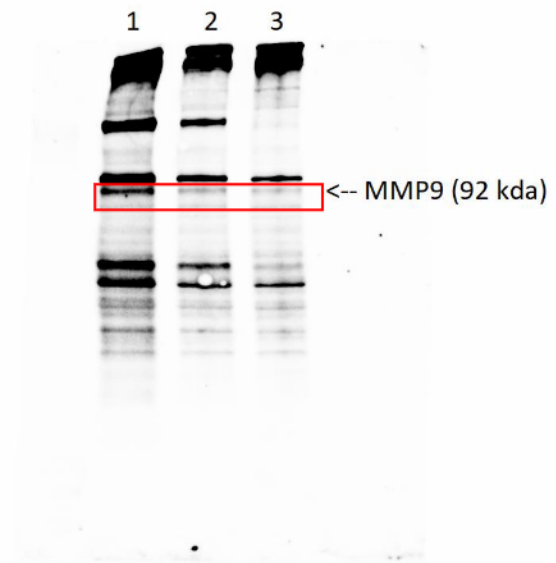
This replicate was used in Figure 2c of the manuscript



Vertical blue lines indicate how the blot was spliced for final presentation

Figure 5

Figure 6



This replicate was used in Figure 4d of the manuscript

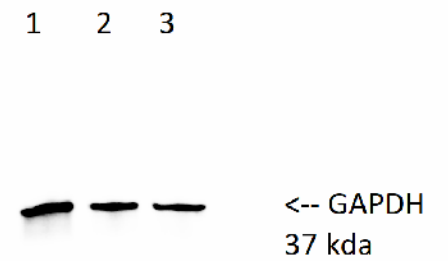
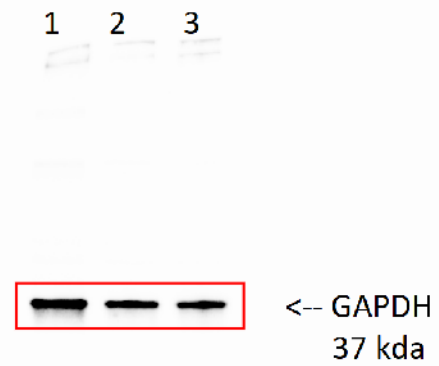
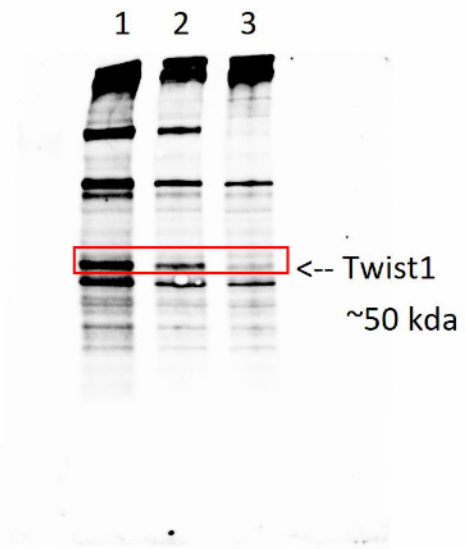


Figure 7



This replicate was used in Figure 4d of the manuscript

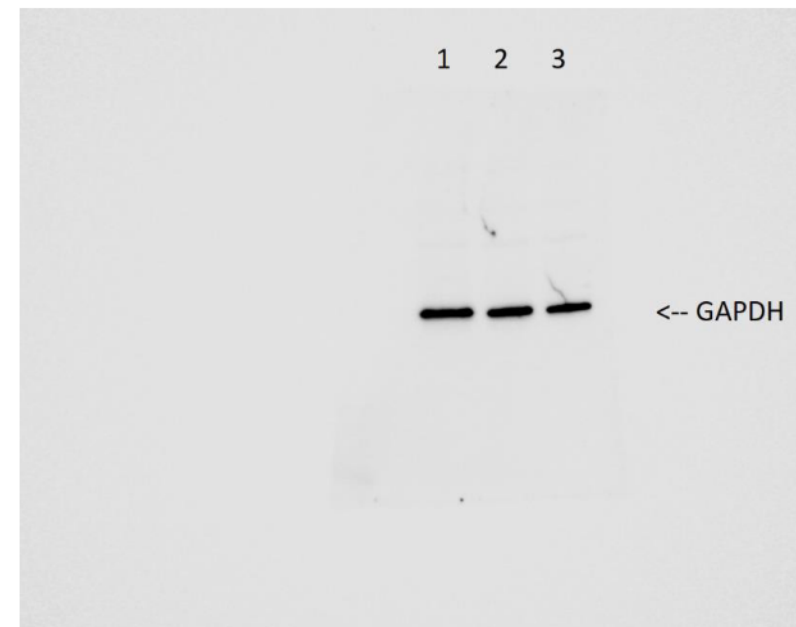
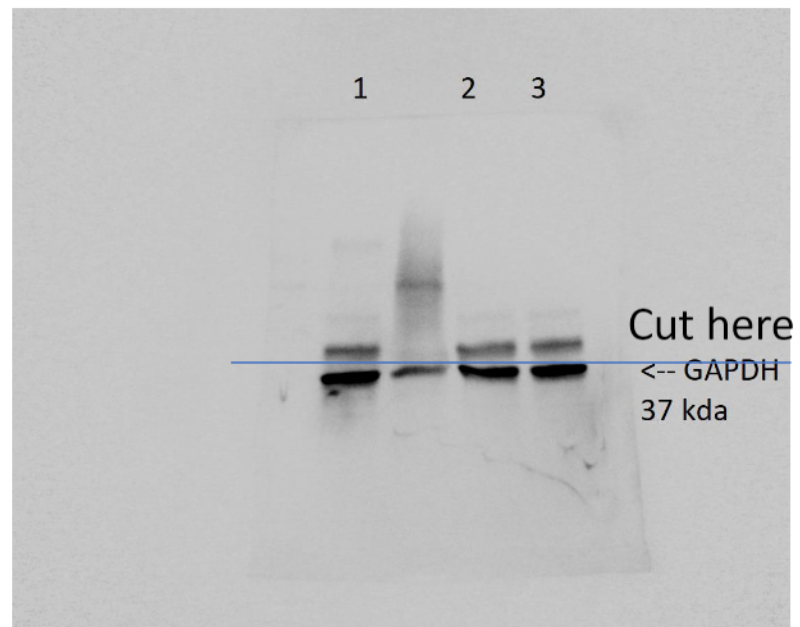
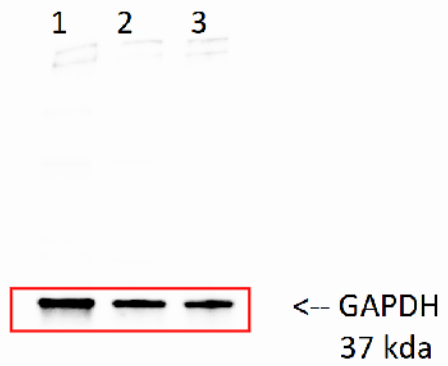
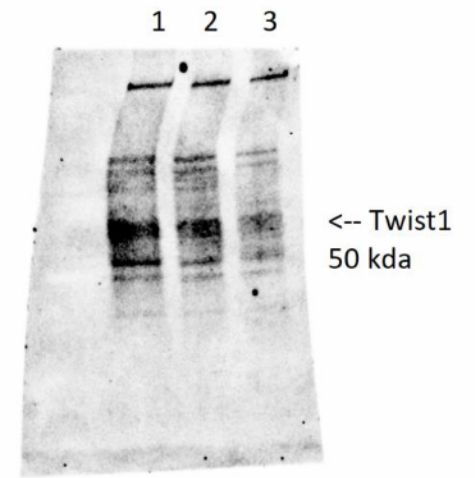
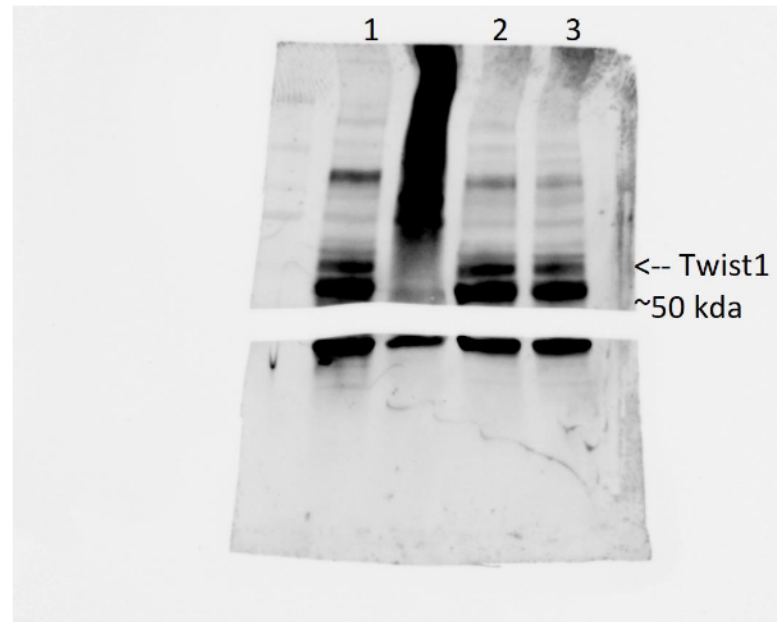
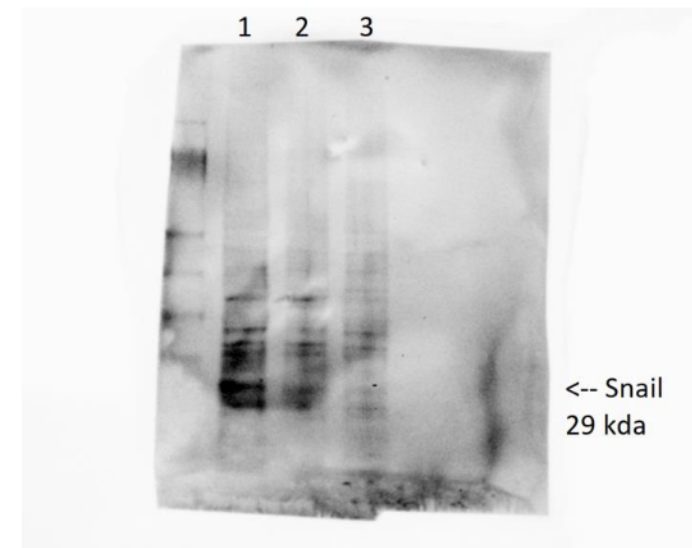
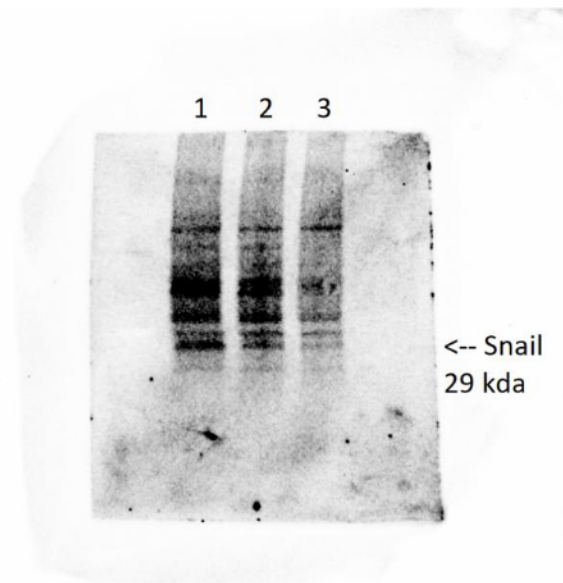
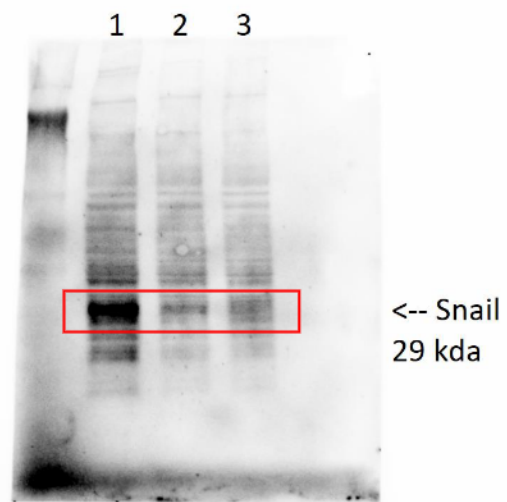
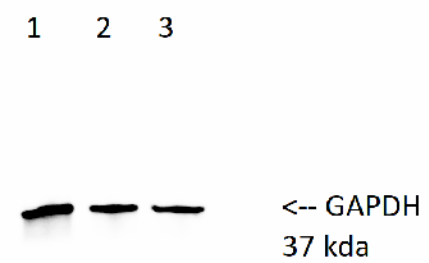
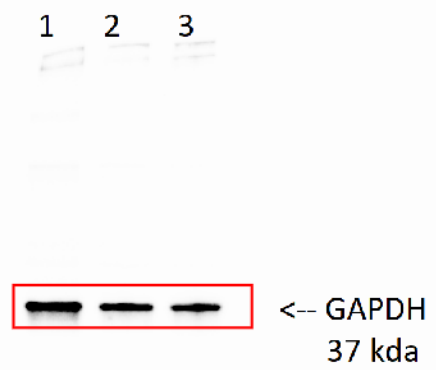




Figure 8



This replicate was used in Figure 4d of the manuscript

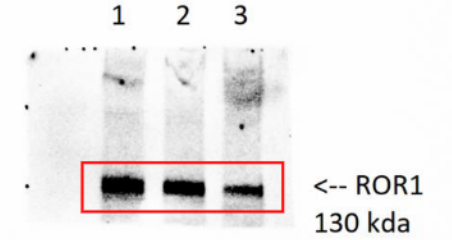
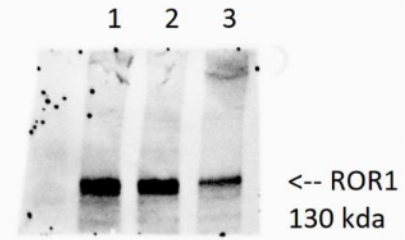
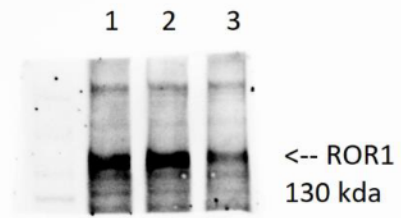


# Raw western blots (Figures 9-13)

1. All lanes used in the manuscript and used for densitometry analysis (N=3) are labeled. Unlabeled lanes were not used for analysis.
2. All proteins used in the manuscript and used for analysis are appropriately labeled. Unlabeled proteins were either not used for analysis or were labeled in subsequent slides.
3. All protein lysate was obtained from DU145 cells.
4. All densitometry analysis was normalized to housekeeping protein (GAPDH).
5. Red boxes indicate how the blot was cropped for publication (approximately).
6. Labeling:
  - Lanes
    - 1: Control
    - 2: Strc 250  $\mu$ M- 24h treatment
    - 3: Strc 250  $\mu$ M- 48h treatment
  - Proteins
    - pGSK3b = phospho-GSK3 $\beta$  (ser9)
    - pAKT = phospho-AKT (ser473)

Figure 9

Membranes were cut approximately at 60-70 kda region before probing/imaging ROR1 and GAPDH.



This replicate was used in Figure 7a of the manuscript

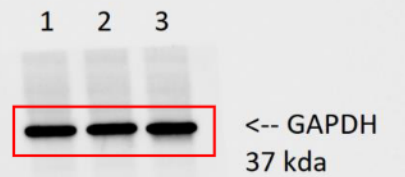
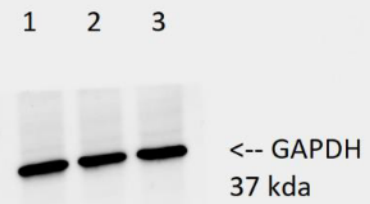
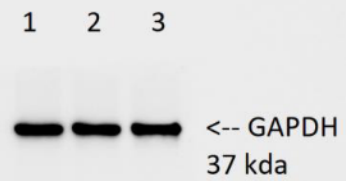
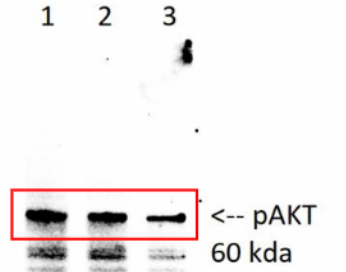
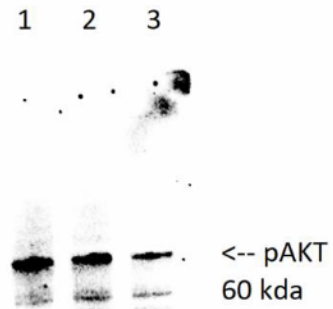
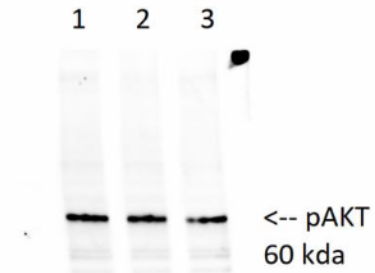


Figure 10



This replicate was used in Figure 7c of the manuscript

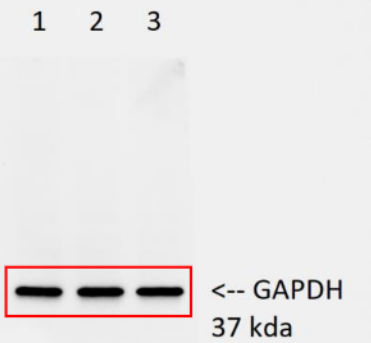
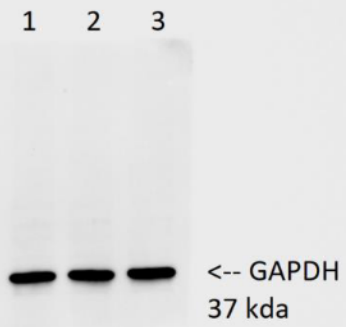
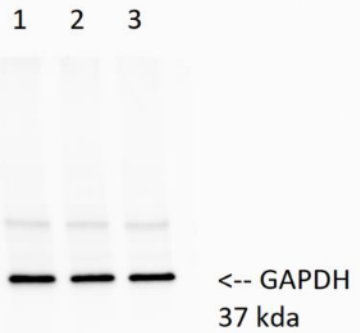
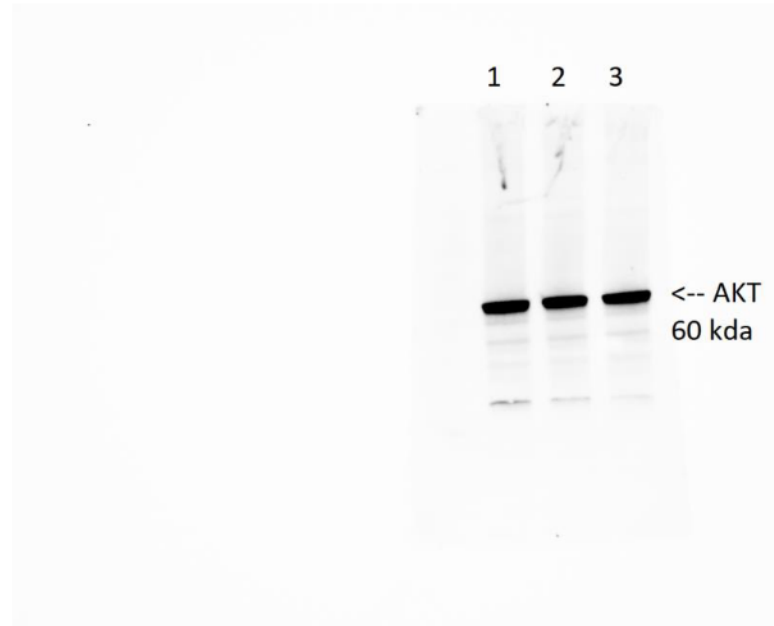
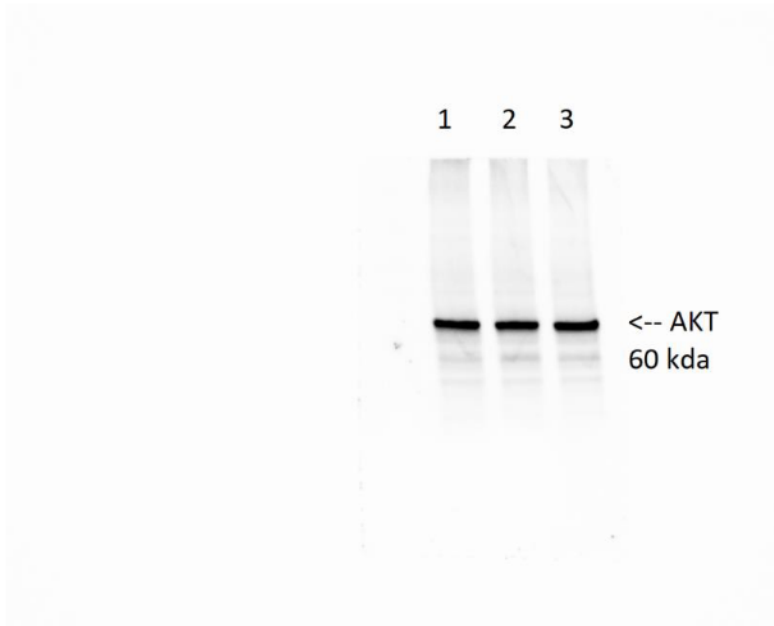


Figure 11



This replicate was used in Figure 7c of the manuscript

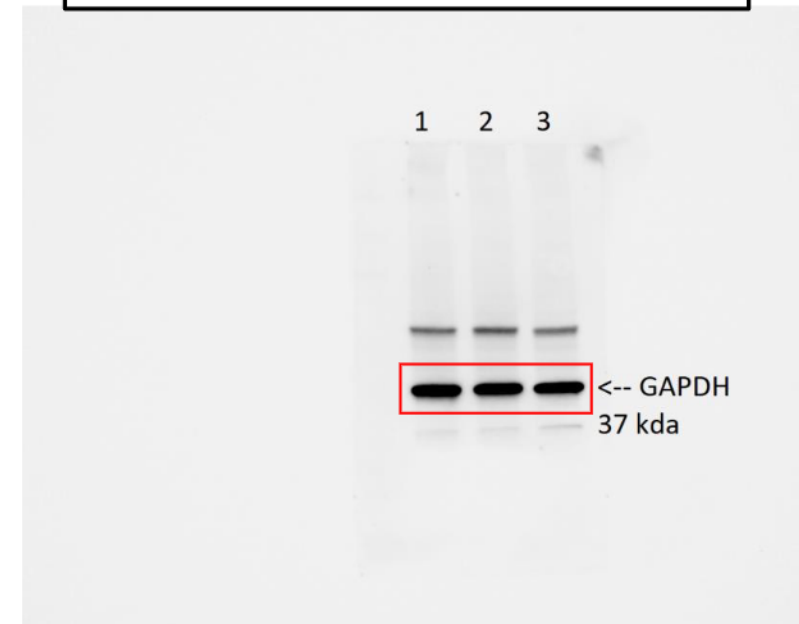
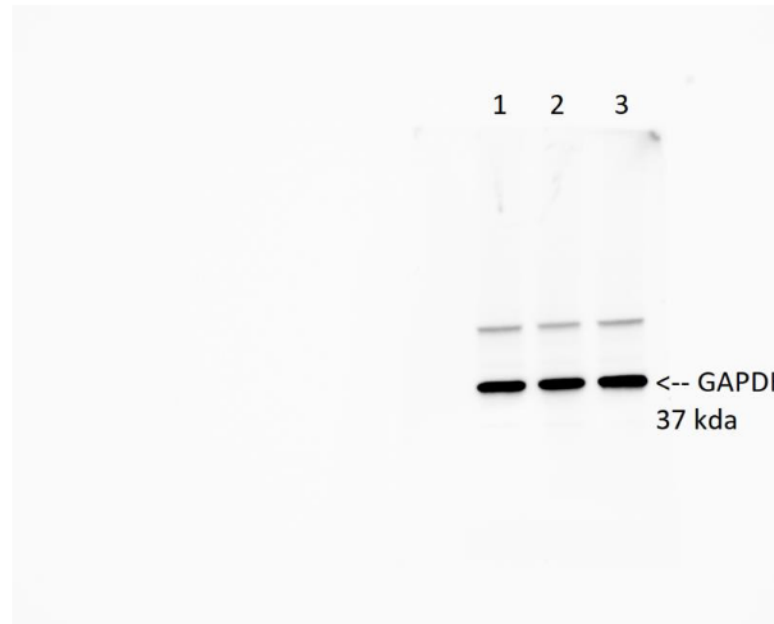
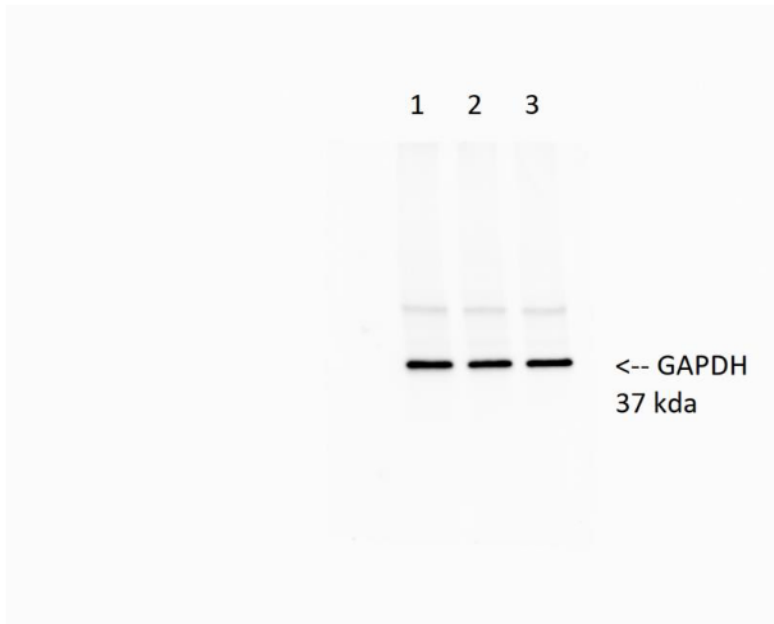
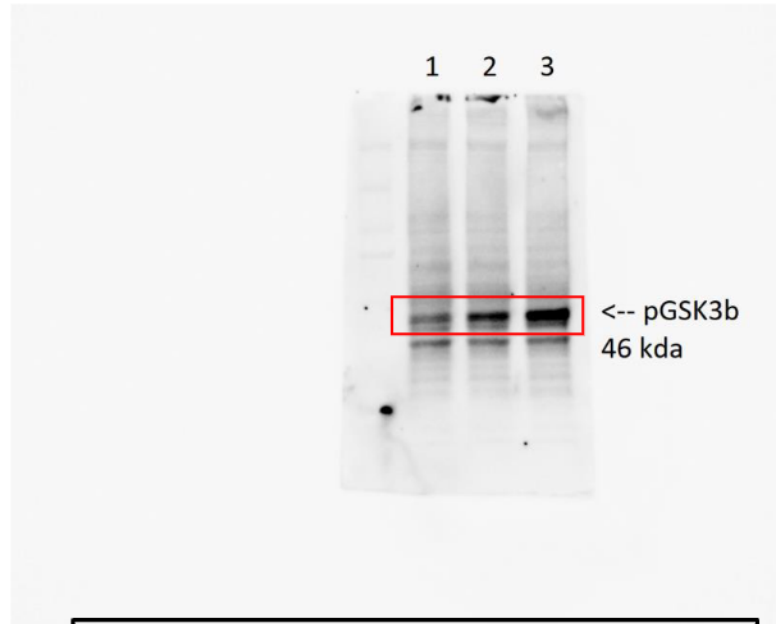
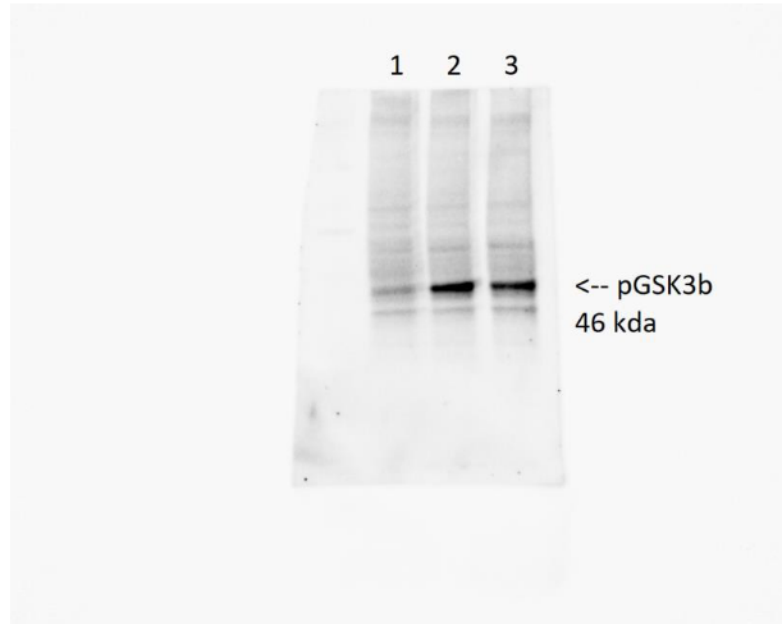


Figure 12



This replicate was used in Figure 7c of the manuscript

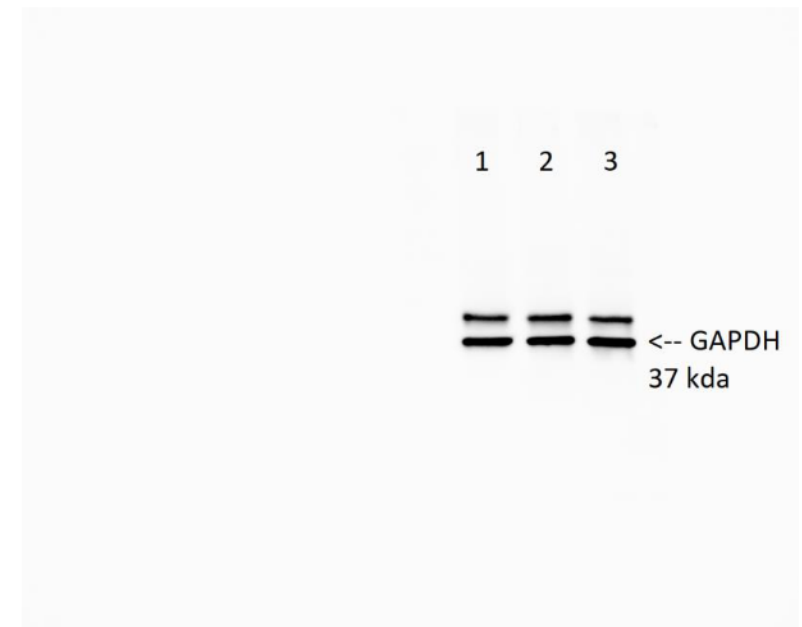
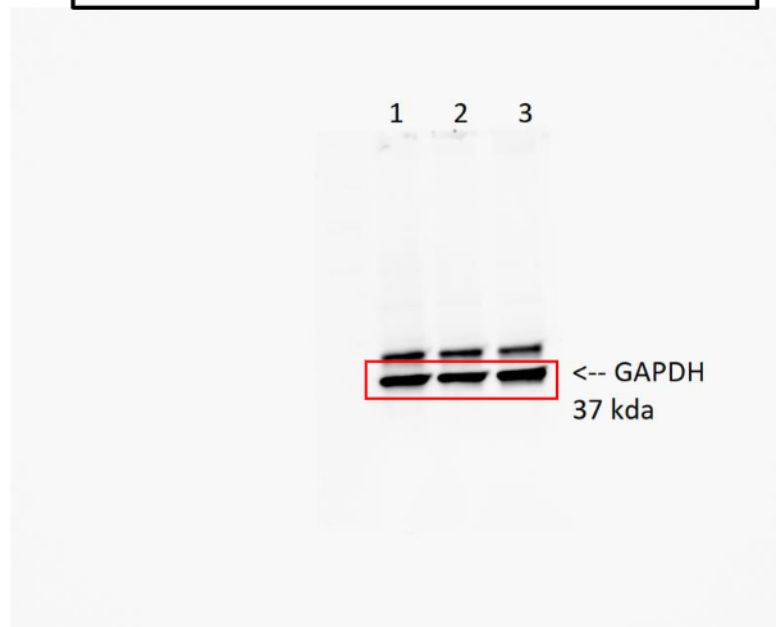
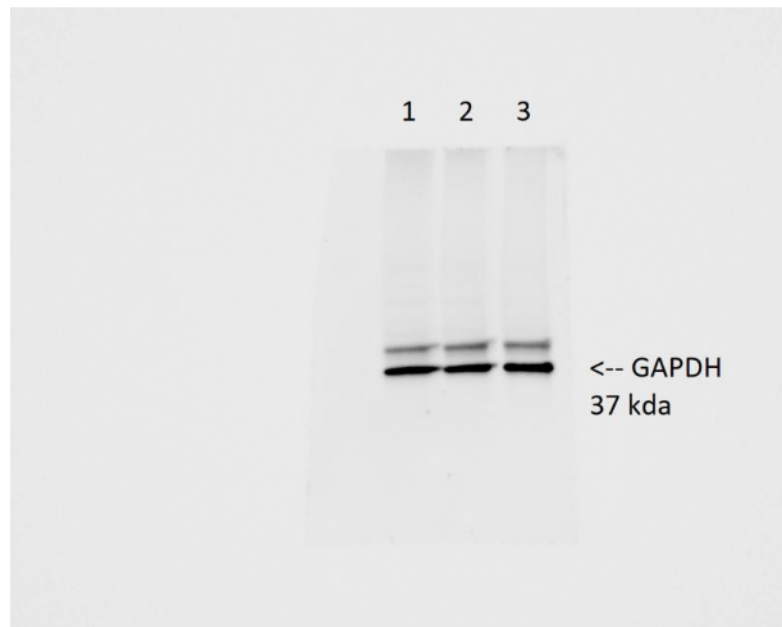
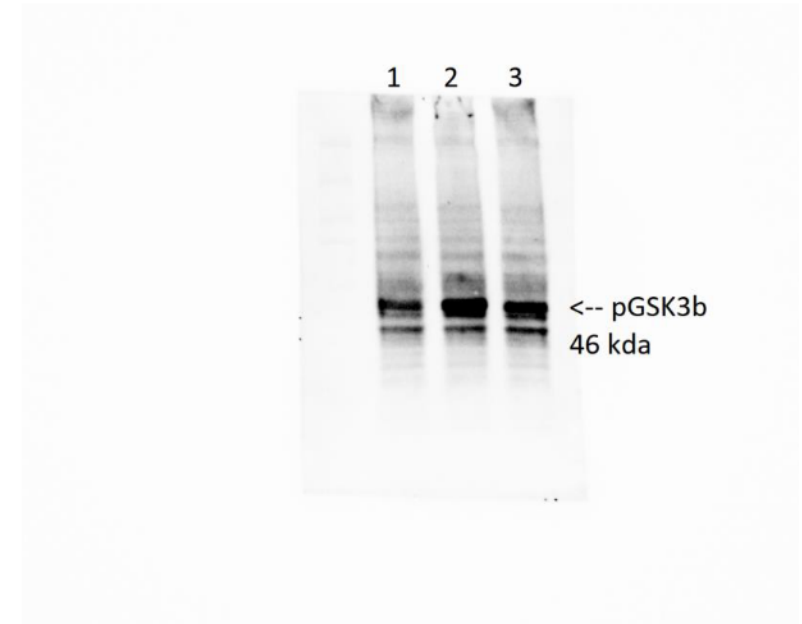
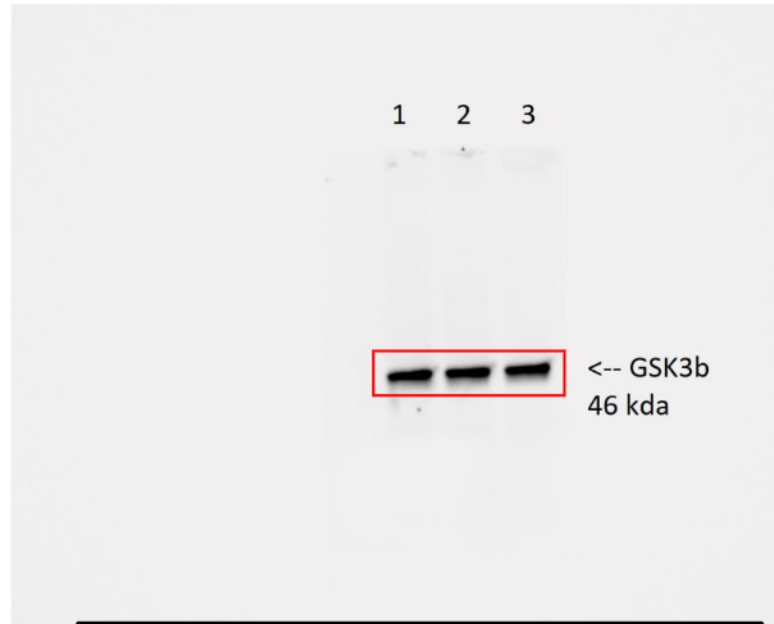
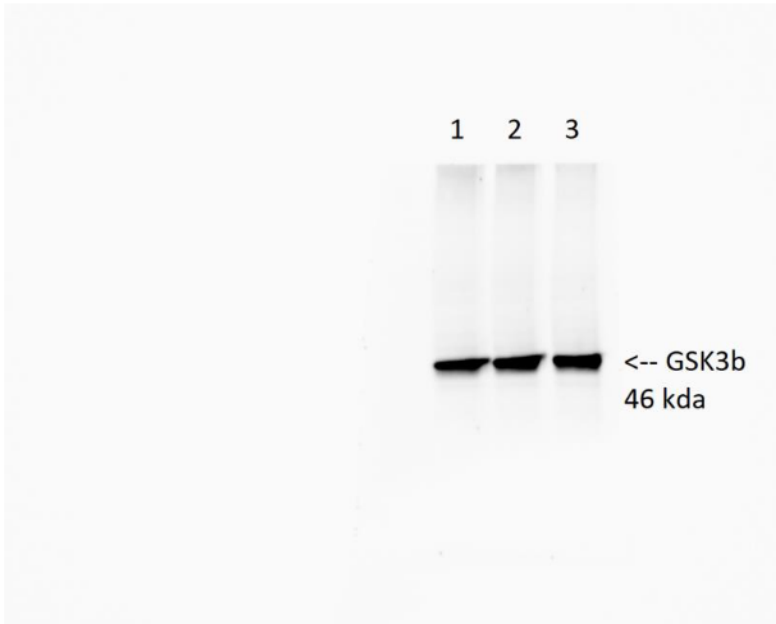


Figure 13



This replicate was used in Figure 7c of the manuscript

