

Figure S1. Strictinin causes the apoptosis of PC3 cells. Quantification of caspase 3/7 flow cytometry on treated PC3 cells. Cells were categorized into live, apoptotic, apoptotic/dead, or dead based on fluorescence intensity of caspase 3 and caspase 7. $N = 3$. *** P value < 0.001 . apop: apoptosis

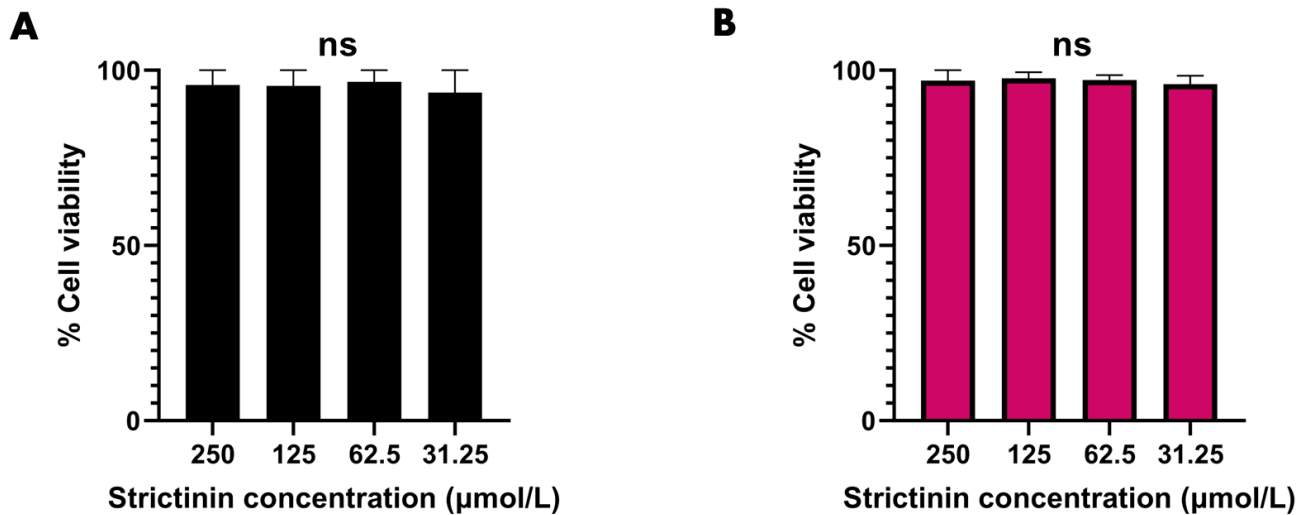


Figure S2. Strictinin treatment at 24 hours does not impact the cell viability of PC3 and RWPE-1. (A) Cell viability of PC3 after treatment with different strictinin concentration for 24 hours. (B) cell viability of RWPE-1 after treatment with different strictinin concentrations for 24 hours. $N = 3$. ns: not significant

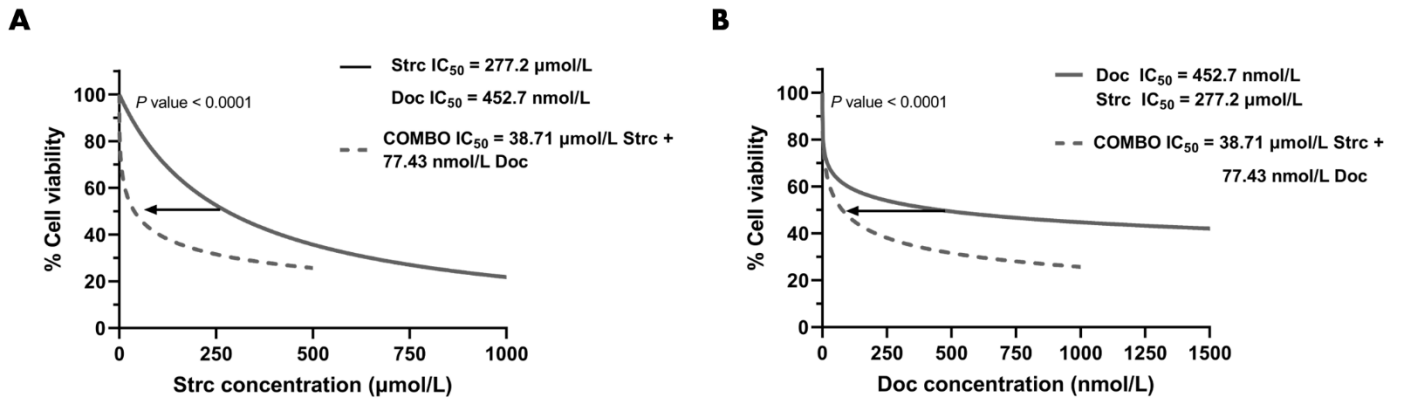


Figure S3. Combination strictinin and docetaxel treatment exhibits synergism in PC3 cells. (A) Cell viability of PC3 after combination strictinin and docetaxel treatment. Data are plotted against strictinin concentration. (B) cell viability of PC3 after combination strictinin and docetaxel treatment. Data are plotted against docetaxel concentration. $N \geq 3$