

Figure S1. Survival rates of patients according to inflammatory status (Yes; $NLR > 3.53$) and non-inflammatory (No; $NLR \leq 3.53$). (Log Rank (Mental-Cox); $p=0.007$)

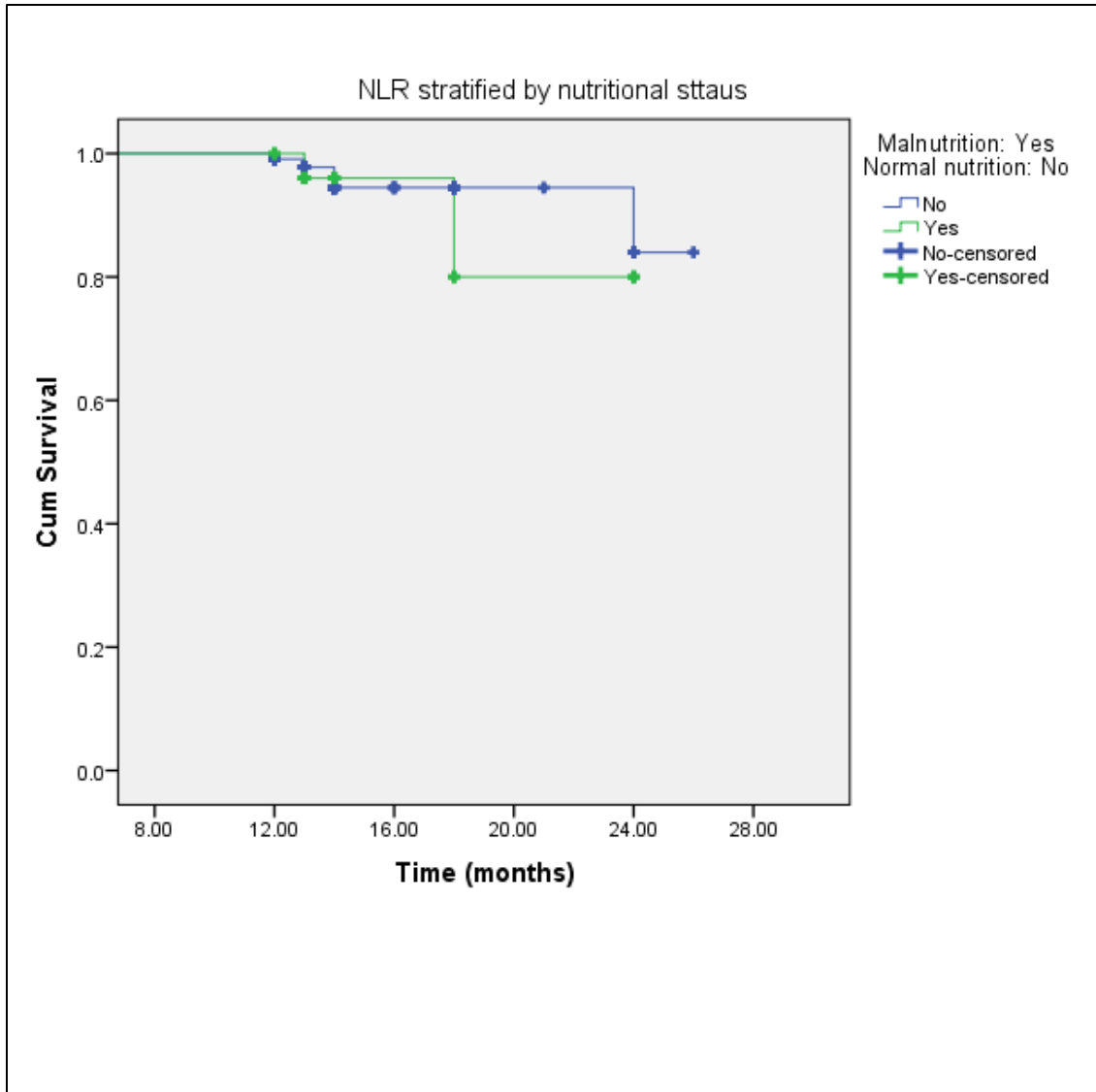


Figure S2. Survival rates of patients according to inflammatory status (Yes; $NLR > 3.53$) and non-inflammatory (No; $NLR \leq 3.53$) stratified by nutritional status. (Log Rank (Mental-Cox); $p=0.05$)

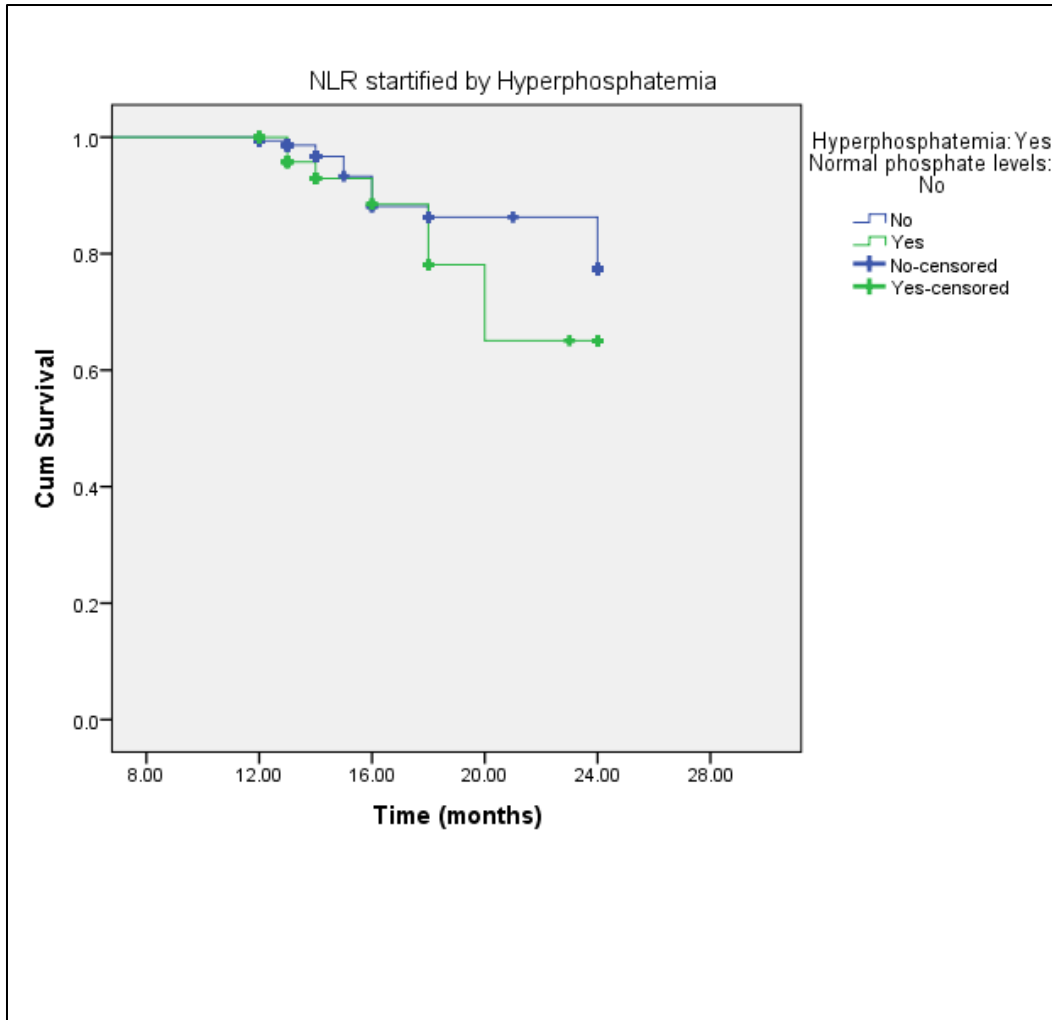


Figure S3. Survival rates of patients according to inflammatory status (Yes; $NLR > 3.53$) and non-inflammatory (No; $NLR \leq 3.53$) stratified by Hyperphosphatemia. (Log Rank (Mantel-Cox); $p=0.01$)